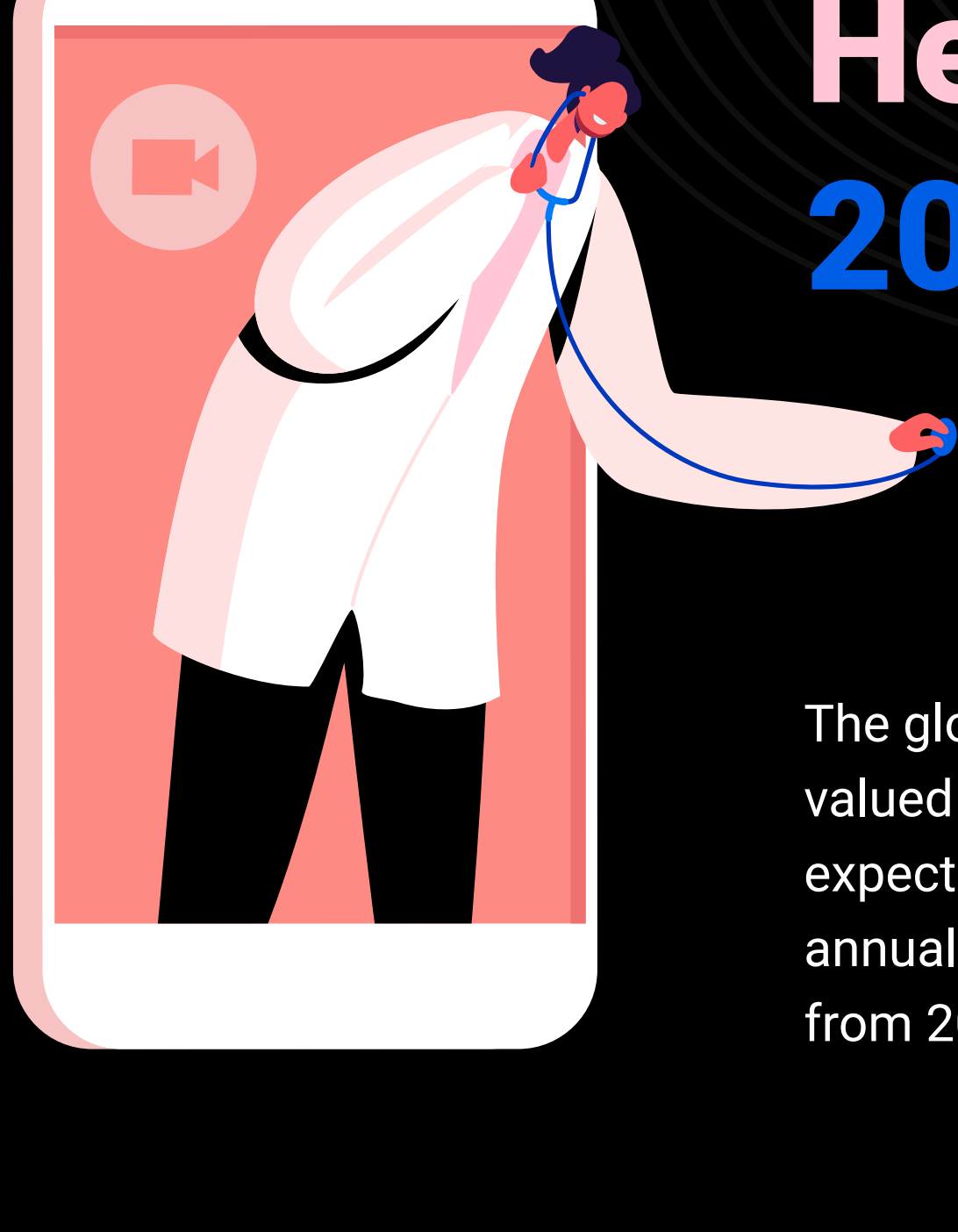


# Future Trends in Digital Healthcare 2022

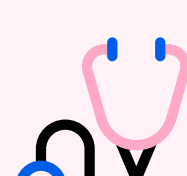


The global digital health market was valued at **\$96.5 billion in 2020** and is expected to grow at a compound annual growth rate (CAGR) of 15.1% from 2021 to 2028.

## Telehealth



Projected market growth from **\$79.79 billion in 2020 to \$396.76 billion in 2027**



About **38X higher utilization** than before COVID-19



**Hybrid Telemedicine** to improve the quality of communication between doctors and patients



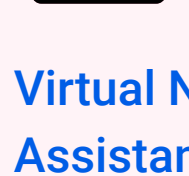
**IoT and Wearables** for effective remote healthcare



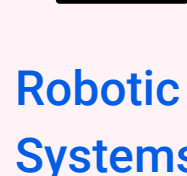
**EHR-Based Telehealth** for easy, quick access to patient data



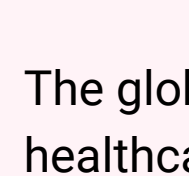
## Artificial Intelligence



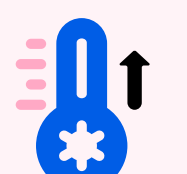
**Virtual Nurse Assistants** for a personalized patient experience



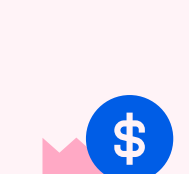
**Robotic Surgical Systems** to conduct surgical procedures from afar



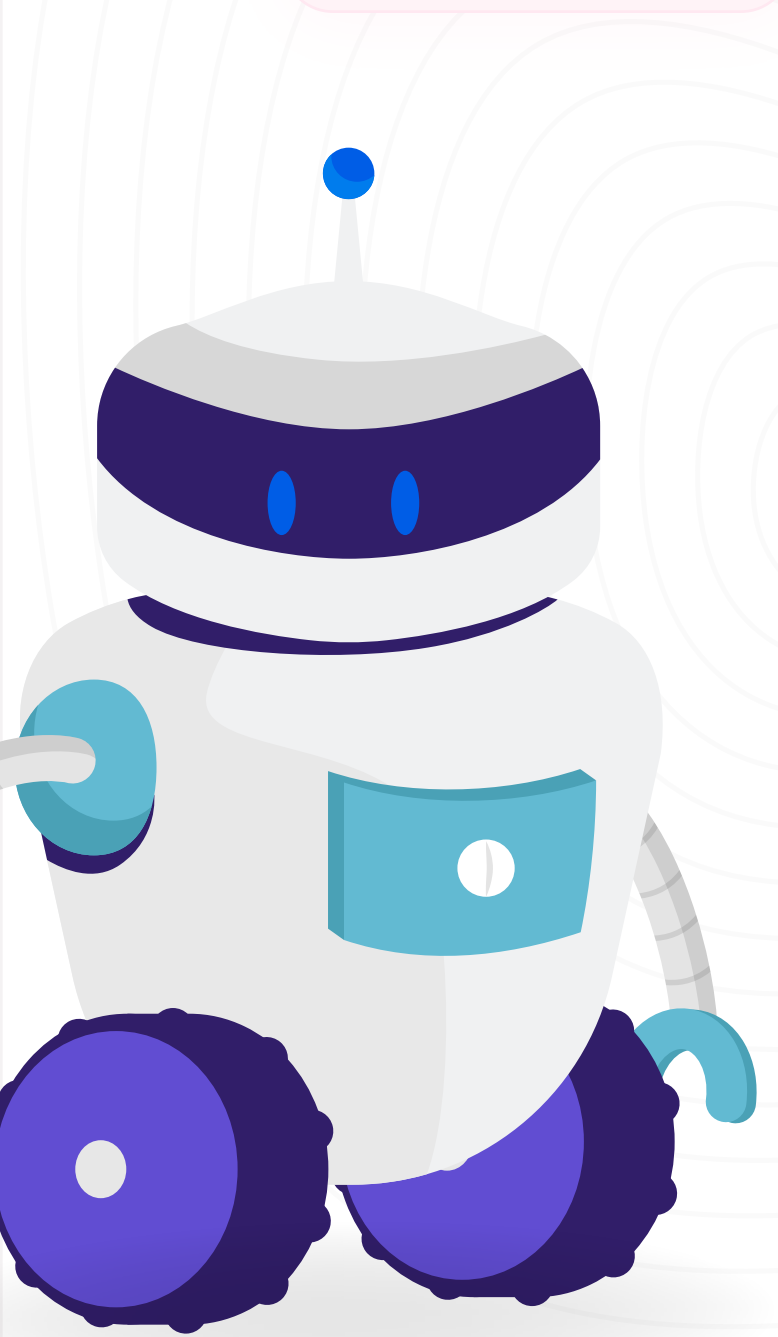
The global AI in the healthcare market size was **valued at \$6.7 billion in 2020** and is anticipated to expand at a CAGR of 41.8% from 2021 to 2028



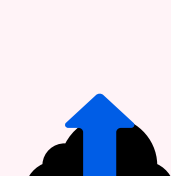
**Thermometers based on Machine Learning (ML)** for diagnosis and treatment



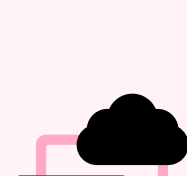
AI applications may cut annual **US healthcare costs by \$150 billion in 2026**



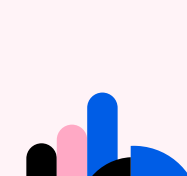
## Cloud Computing



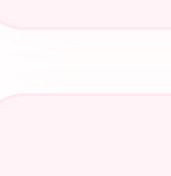
The market for healthcare cloud computing is **expected to grow from \$28.1 billion in 2020 to \$64.7 billion by 2025**



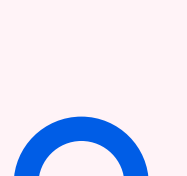
**On-demand healthcare storage** to save on capital and operational expenditure



**High-powered analytics** for more personalized patient care plans



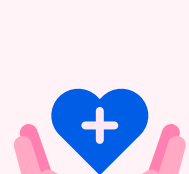
**Electronic medical records (EMRs)** are stored in the cloud for proper diagnosis and treatment



Medical imaging is digitized and stored in the cloud



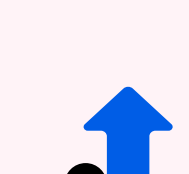
## Predictive Analytics



Predictive care for at-risk patients in their homes



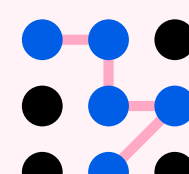
Precision medicine and new therapies



The Healthcare **Predictive Analytics** market is **projected to grow from \$3.74 Billion in 2019 to \$28.77 Billion by 2027**



Identify patient deterioration



Predict patient utilization patterns

